



## ROBERTO | SDR501125

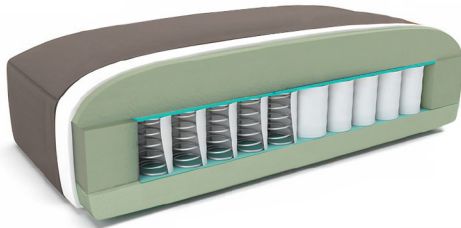
### 3-seater sofa

#### PRODUCT INFORMATION

Dimensions:	Total: 78"W 35"D 34"H
	Seat: 21"D 17"H Arm: 24"H
Cover:	100% Leather. Colour: 125-Dark Gray
Finish:	Legs: Gray Powder Coated Steel.
Weight:	XX lbs

#### CARTON INFORMATION

Ctn. Size:	Total: XX"W XX"D XX"H.
Ctn. Cube:	XX Cu.Ft.
Ctn Weight:	XX lbs
# Item/Ctn:	1
# Ctn/Item:	1 (Bag Wrap / Cardboard Corners)
Assembly:	Some Assembly Required.



Pocket sprung seat provides the ultimate support platform ensuring proven long lasting personal comfort and durability: high resilience; longer life; even firmness throughout the cushions; individual support; increased level of comfort; improved appearance; precision stitching for resilience and style; and better cover performance especially with thick leathers. Understructure: genuine hardwood frame for stability, durability and quality; corner blocks for added strength and longer life.

#### PRODUCT WRITE UP

The answer to the cozy comfort. As chic as it is comfortable, the upholstered modern bench frame features a stylishly geometric shape that pops out against any modern décor while its turned espresso legs adds strength and ensures life-long stability. Perfectly scaled, this 3-seater sofa incorporates the right combination of beauty, durability and utility. The square-esque structure of the framing makes the it stable and capable of being matched with almost any motif or decor. Contract Quality.

**COVER CONTENT:**  
100% Italian Tanned Leather

**COVER ABRASION:**

**WOOD CONTENT:**  
Legs: High Quality Steel.

**SEAT:**  
Pocket Coil